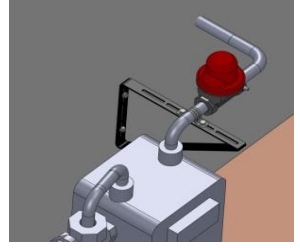


The Stabilizer Brace EVB-01 is designed to limit vibrations in your gas line, reducing the possibility of nuisance tripping, and to ensure proper operation of the Seismic Gas Shut-Off Valve. The brace should be installed within 6" of the gas valve between the gas meter and the seismic shut-off valve (or as required by local building & safety codes) and rigidly secured to the structure. Stabilizer Brace EVB-01 is supplied with an installation hardware packet, and can be used horizontally or vertically depending on the orientation of the valve being installed.



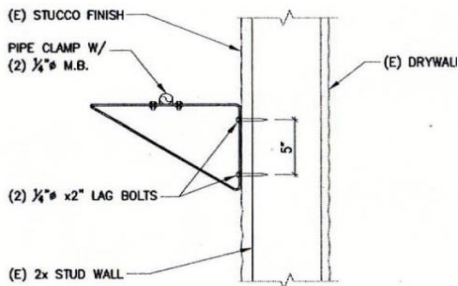
STABILIZER BRACE & HARDWARE KIT PARTS LIST

- EVB-01 Stabilizer Brace (1 pc.)
 - 1/4" x 2" Lag Bolt (2 pcs.)
 - 1/4" x 3" Toggle Bolt (2 pcs.)
 - 1/4" Lag Shield (2 pcs.)
 - 1/4" Flat Washer (6 pcs.)
 - 1/4 -20 x 3/4" Hex Screw (2 pcs.)
 - 1/4 -20 Ny-lock Nut (2 pcs.)
 - 2 Hole Pipe Strap* (1 pc.)
- *(3/4" = R1, 1" = R2, 1-1/4" = R3, 1-1/2" = R4, 2" = R5)

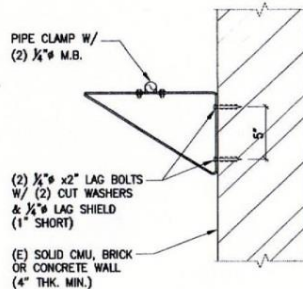


INSTALLATION INSTRUCTIONS

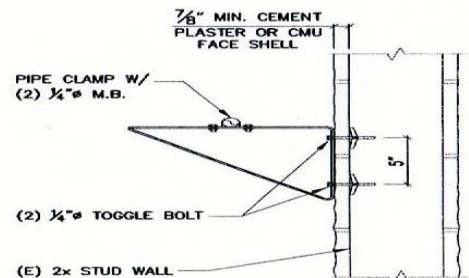
- Use EVB-01 to mark the position for the wall mounting hardware at the stud location. Brace should be located between the gas meter and the Seismic Shut-Off Valve, within 6" of the valve body.
 - Drill a 3/32" hole into the stud to a depth of no less than 2-1/4". Removal of material covering studs may be necessary by drilling ≈1/2" hole through the outside material.
 - Attach Brace to wall using the included lag screws and washers, following the detail below as a guide.
 - Secure pipe to brace using the included pipe clamp and remaining hardware.
- Use EVB-01 to mark the position for the wall mounting hardware. Brace should be located between the gas meter and the Seismic Shut-Off Valve, within 6" of the valve body.
 - Drill a 1/2" hole to a depth of no less than 2-1/4" into the solid wall.
 - Insert Lag Shield into the 1/2" hole so that it is flush with the wall surface.
 - Attach Brace to wall using the included lag screws and washers, following the detail below as a guide. It may be necessary to start the lag screw by hand into the lag shield until they tighten enough to prevent movement of the lag shield.
 - Secure pipe to brace using the included pipe clamp and remaining hardware.
- Use EVB-01 to mark the position for the wall mounting hardware. Brace should be located between the gas meter and the Seismic Shut-Off Valve, within 6" of the valve body.
 - Drill a 3/4" hole through one side of hollow wall.
 - Insert toggle bolt through the provided washer and then through the mounting brace slots and attach toggle wing.
 - Fold toggle wing and insert through the 3/4" drilled hole.
 - Attach Brace to wall by tightening the toggle bolts, using the detail below as a guide. It may be necessary to apply a slight pulling force on the toggle bolt until it tightens against inner wall surface.
 - Secure pipe to brace using the included pipe clamp and remaining hardware.



WOOD FRAMED WALL



SOLID CMU, BRICK OR CONCRETE WALL



HOLLOW WALL

As mounting surfaces vary, it is the installer's responsibility to be certain that the valve is rigidly secured to the wall using additional hardware when necessary. If the valve is located in an isolated area, secure the pipe to a 3" concrete filled ballast or steel pipe that has a minimum 12" x 12" x 12" concrete footing (or as required by local building & safety codes).